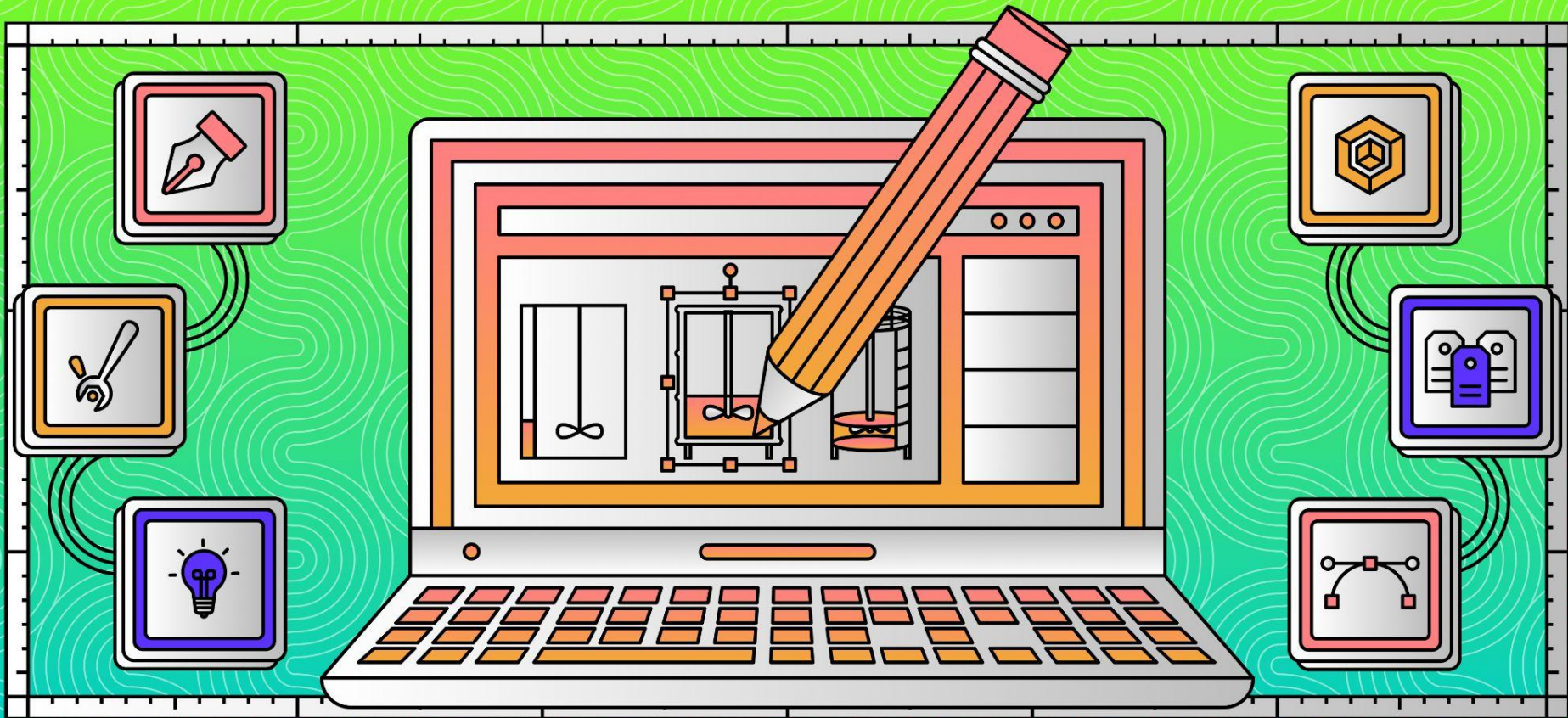


Create Custom Graphics With the Ignition Perspective Drawing Editor



Speakers



Christine Lee

Sales Engineer I

Inductive Automation



Charles Ahrens

Senior Application Engineer I

Inductive Automation

Agenda

- Introductions
- Overview of the Drawing Editor
- How to Configure Bindings
- Live Demo
- Drawing Best Practices
- Additional Resources
- Q&A



About Inductive Automation



Johnson & Johnson



Chobani

69%

of Fortune 100

5k+

Registered
Integrators

140+

Countries

23+

Years In The
Industry

DFW

FUJIFILM



Crate&Barrel



NOV



BASF

Introducing Ignition

The Unlimited Platform for Enterprise Integration, Industrial Applications, and More:

- One central hub for the plant floor and beyond
- Web-deploy to desktops, industrial displays & mobile devices
- Unlimited licensing
- Cross-platform compatibility
- Industrial-strength security & stability
- Build any kind of industrial application

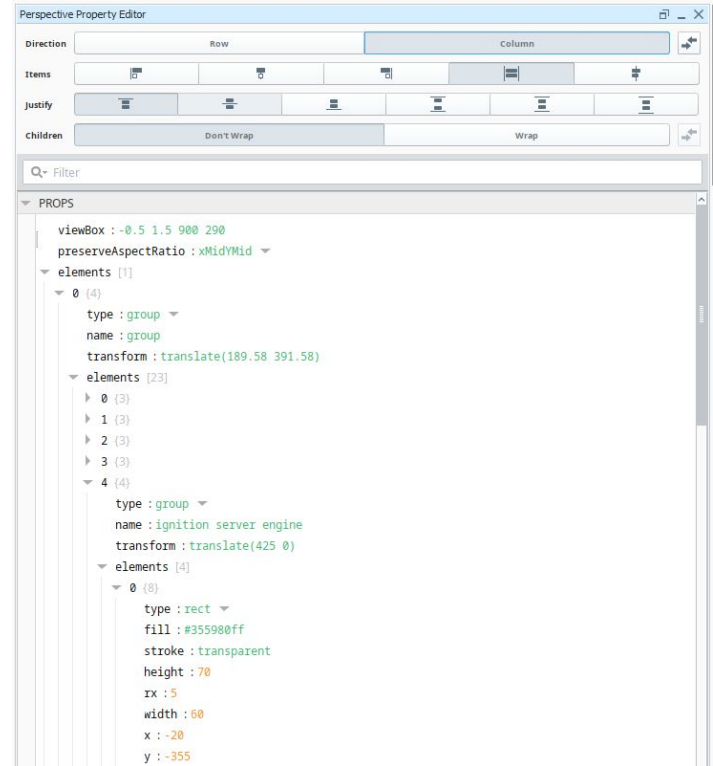


**IT STARTS
WITH IGNITION.**



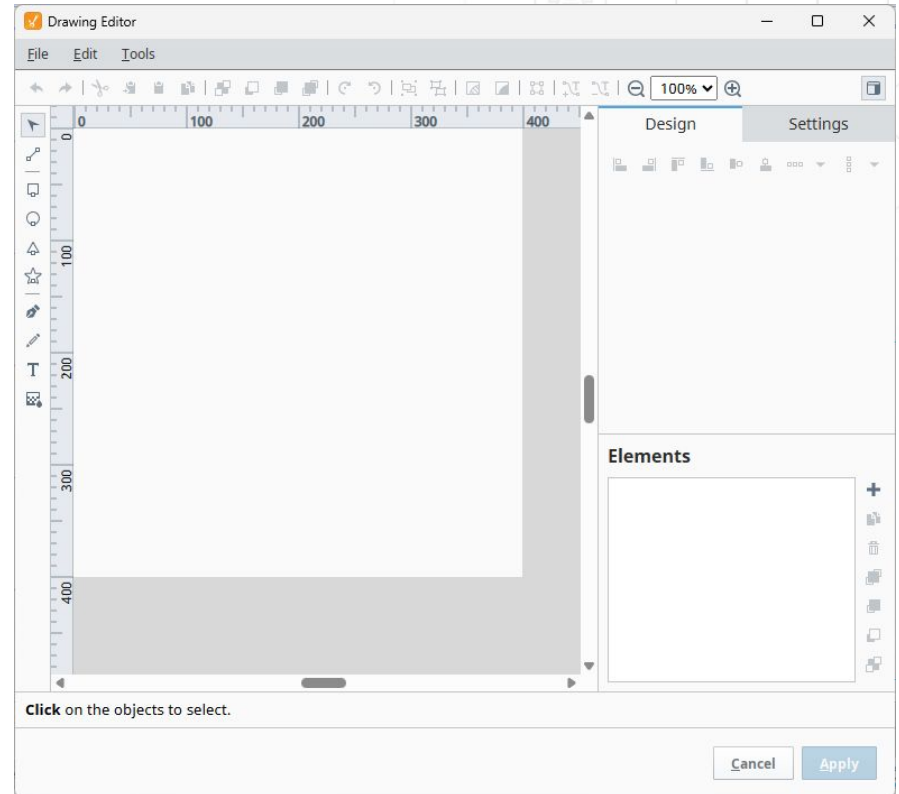
Drawings Before Ignition 8.3

- Before 8.3, you could embed an SVG (drawing) in Perspective
- Edit properties directly
- Not very visual
- Requires knowledge of element structure
- Bindings need to be set up one object at a time



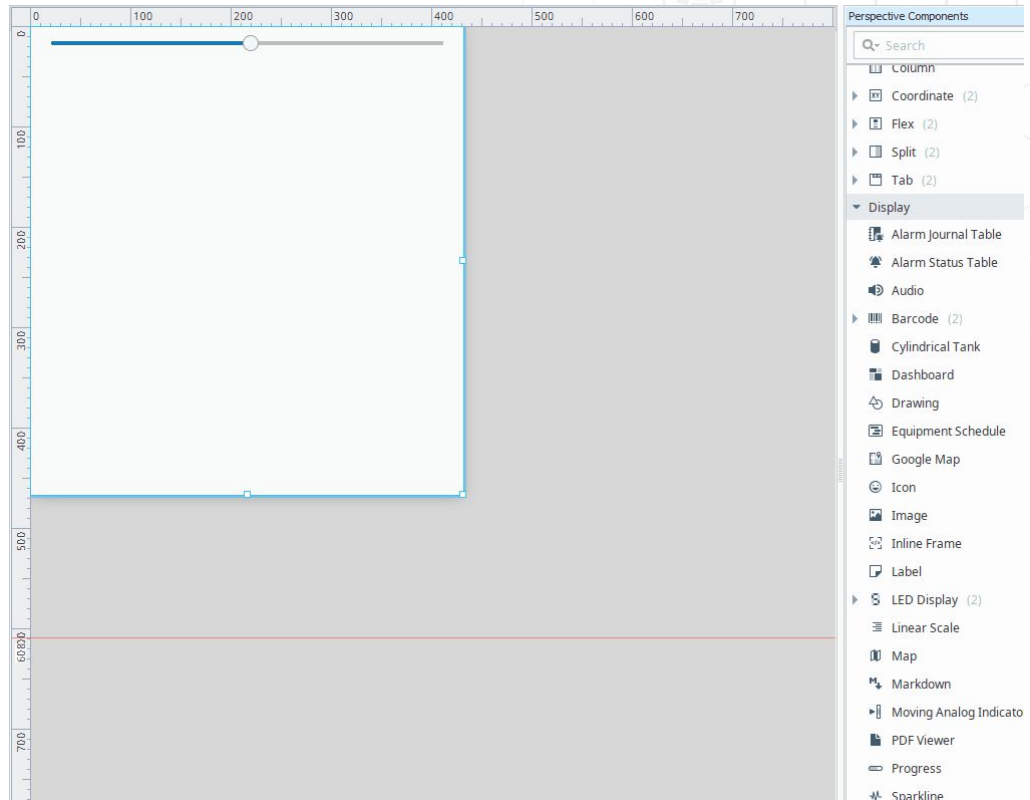
The Drawing Editor

- Ignition 8.3 adds the new Drawing Editor
- Fully featured SVG editor with many tools and options
- Allows you to create drawings from scratch or edit existing drawings
- Configure bindings on the drawing directly



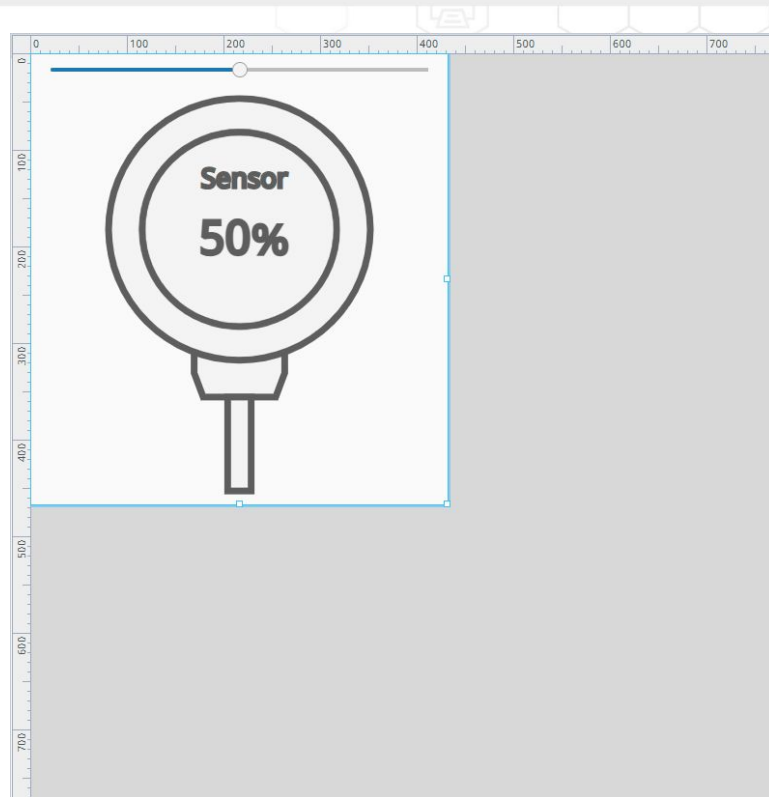
Drawing Editor - Create New Drawings

- Insert a Drawing Component
- Use the Drawing Editor to add shapes, text, and configure bindings



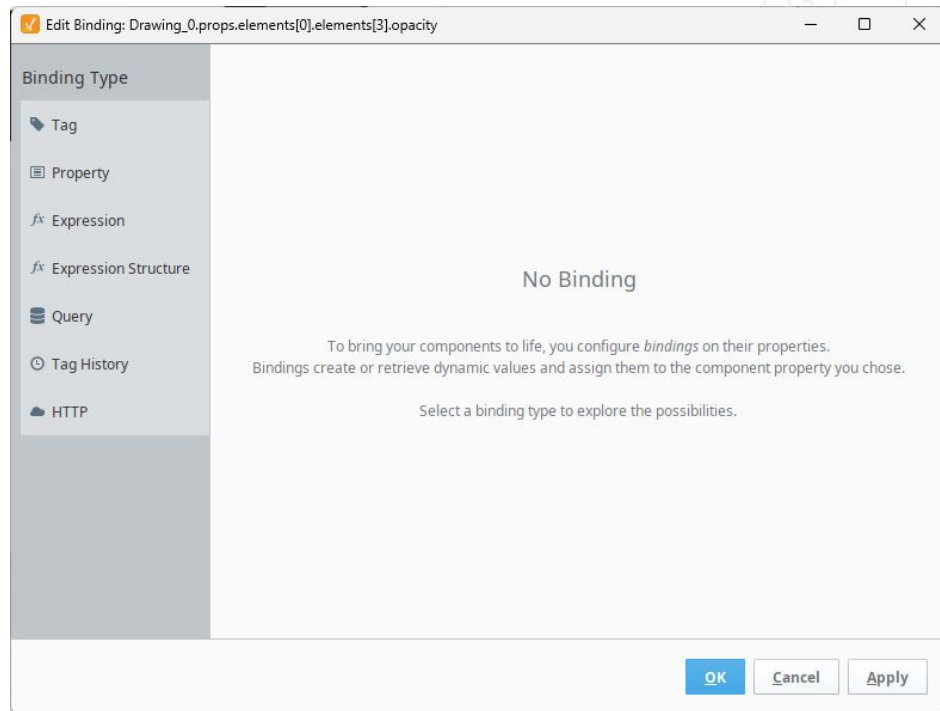
Drawing Editor - Editing Existing Drawing

- Built-in symbols can be edited by converting to drawings
- Bindings on symbols will need to be redone on the drawing after converting
- Symbols converted to drawings will lose the ability to switch between mimic/simple/p&id themes

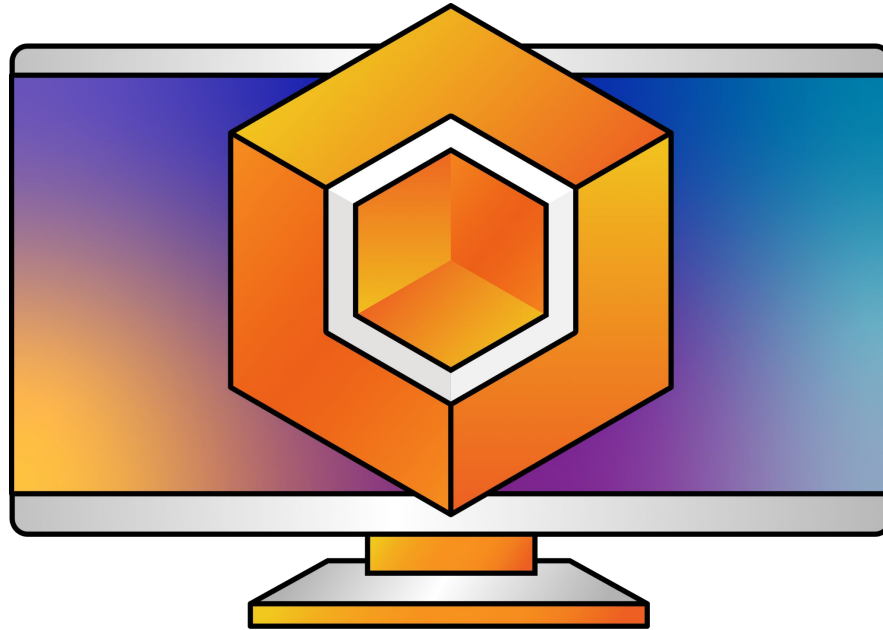


Bindings

- Most drawing elements can have bindings
- Bindings use the normal binding editor
- You can change fill and stroke settings, text, and opacity from within the Drawing Editor
- Additional properties can have bindings edited through the Perspective Property Editor



Demo



Best Practices + Tips

- Group your elements
 - Group items in a way that makes sense
- Name each element with a helpful name
 - **South Conveyor Belt** is a lot better than **rect-5**
- Don't have too many elements
 - Keep it under 1000 elements in a single drawing
- Take advantage of keyboard shortcuts!
 - Full list is on the Drawing Editor [documentation](#)



Other SVG Resources

- W3Schools - Documentation and Examples of SVG properties
https://www.w3schools.com/graphics/svg_intro.asp



- SSSVG - Interactive SVG Reference
<https://www.fffuel.co/sssvg/>



- More Advanced SVG Session at ICC 2026 (September 22 - 24)

Ignition! 8.3

Ready To Try Ignition For Yourself?

Download the full version for free at:

inductiveautomation.com



[inductiveuniversity.com](https://www.inductiveuniversity.com)

*Ignition User Manual also available at:
docs.inductiveautomation.com*

International Distributors

Brazil	FG Automação Industrial	www.fgltda.com.br
Central America & Colombia	NV Tecnologías S.A.	www.nvtecnologias.com
France	AXONE-iO	www.axone-io.com
Italy	EFA Automazione S.p.A	www.efa.it
Middle East/North Africa	Clarien Solutions	www.clarien.solutions
Norway & Sweden	Autic System AS	www.autic.no
Sub-Saharan Africa	Element8	https://element8.co.za
Switzerland	MPI Technologies	https://mpi.ch
Austria & Germany	Relatech S.p.A.	https://relatech.com

Contact International Distribution Manager Yegor Karnaukhov at: ykarnaukhov@inductiveautomation.com

Questions & Answers



Call us at: **800-266-7798** Email us at: accountservices@inductiveautomation.com



For Inductive Automation Australia, call: **1300 10 8088**

Thank You

Stay connected to us on social media
& subscribe to news feeds:

